

S1
REC'D COMPENSATOR
151 POS. - 76
280 POS. - F.M.
380 POS. - L.P.
478 POS. - 418A
574 POS. - 5114ED
674 POS. - 149E

S1
BANDSWITCH POSITIONS
151 POS. - PHONE
280 POS. - AM
380 POS. - FM
478 POS. - FM & AFC

NOTES:
TUNING RANGES: 540-1520 ET STD. A.M.
540-1520 MC. H.
AMP. MOD. I.F. 11ED: 455 KC
FREQ. MOD. I.F. F.AED: 10.7 MC
ALL VOLTAGES MEASURED FROM COMMON RETURN TO POINTS INDICATED WITH A
TRACER TUBE HOLDING T.E.
ALL VOLTAGES ARE D.C. UNLESS OTHERWISE SPECIFIED.
BANDSWITCH S1 SHOWN IN PHONO POSITION FULL COUNTERCLOCKWISE AS
VIEWED FROM FRONT OF CHASSIS.
ALL RESISTORS ARE 20% TOLERANCE, 1/2 WATT, CARBON UNLESS OTHERWISE
SPECIFIED.

⊥ DENOTES CHASSIS

ZENITH RADIO CORP.

Model SF2530, Chassis 9B26, 3B32

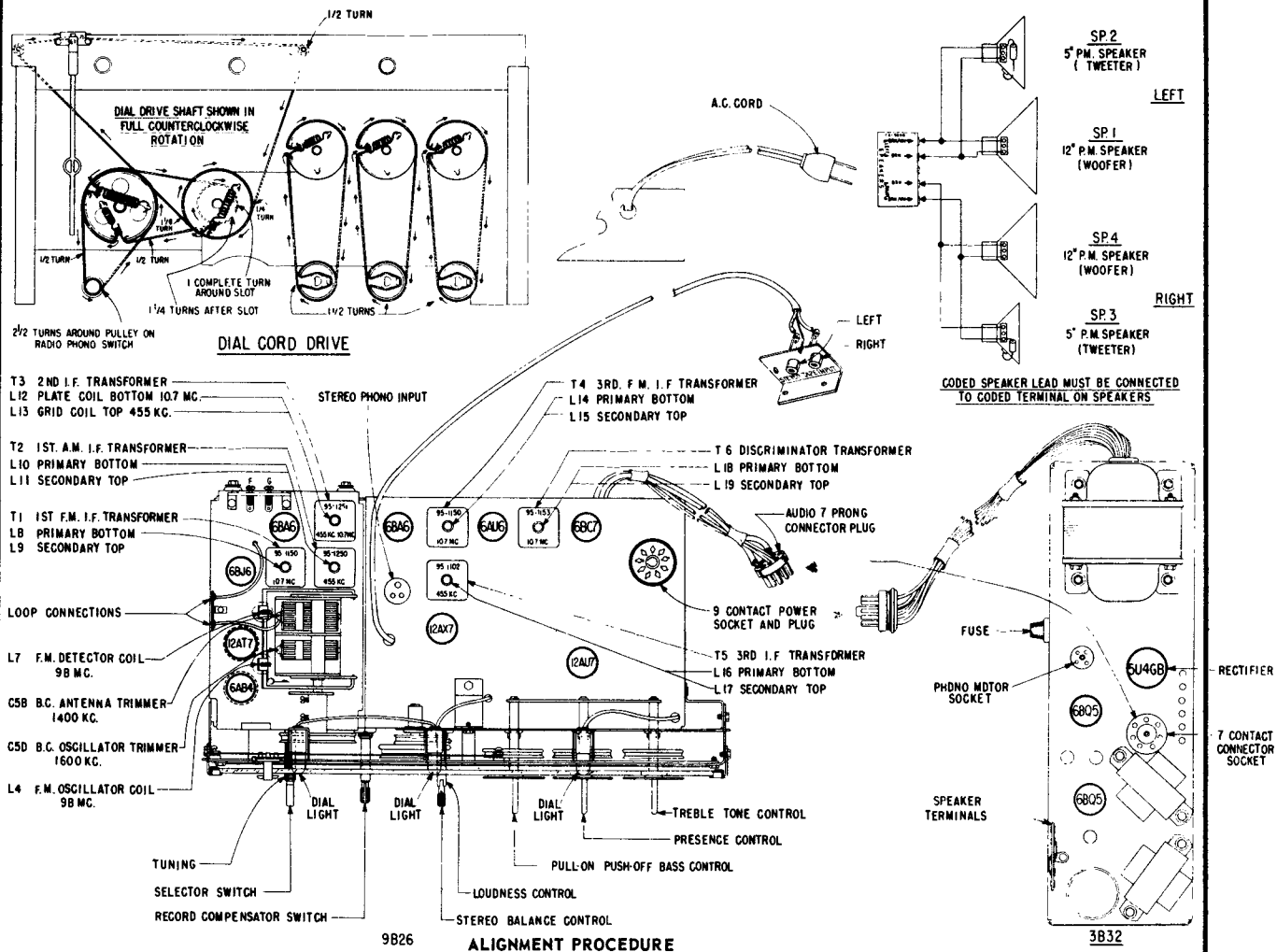
(Alignment information on the next page, over)

**9B26
MAIN CHASSIS**

**3B32
POWER SUPPLY**

ZENITH MODEL SF2530 CHASSIS 9B26-3B32

Alignment Information (Continued from page 177)



	CONNECT OSCILLATOR TO	DUMMY ANTENNA	INPUT SIGNAL FREQUENCY	BAND	SET DIAL TO	ADJUST	PURPOSE
1	Pin 2 on 12AT7 Mixer	.05 mfd.	455 Kc., 400 Cycle Modulated	AM	600 Kc.	L10,11,13,16 & 17	Align I.F. channel for maximum output.
2	TWO TURNS LOOSELY COUPLED TO WAVEMAGNET	.05 mfd.	1600 Kc., 400 Cycle Modulated	AM	1600 Kc.	C5D	Set oscillator to dial scale.
3		.05 mfd.	1400 Kc., 400 Cycle Modulated	AM	1400 Kc.	C5B	Align antenna stage.
4	IMPORTANT: Before attempting to align the FM portion of this receiver the Band switch should be turned to "FM".						
5 (a)	Pin 1 (grid) on 6AU6 limiter	.05 mfd.	10.7 Mc. Unmodulated	FM		L18	Align primary of discriminator for maximum reading.
6 (b)	Pin 1 (grid) on 6AU6 limiter	.05 mfd.	10.7 Mc. Unmodulated	FM		L19	Adjust secondary of discriminator for zero reading.
7 (c)	Pin 1 (grid) on 6BA6 2nd IF	.05 mfd.	10.7 Mc. Unmodulated	FM		L14,15	Align 3rd I.F. transformer for maximum reading.
8 (c)	Pin 1 (grid) on 6BA6 1st IF	.05 mfd.	10.7 Mc. Unmodulated	FM		L12	Align 2nd I.F. transformer for maximum reading.
9 (c)	Pin 2 on 12AT7 Mixer	.05 mfd.	10.7 Mc. Unmodulated	FM		L8,9	Align 1st I.F. transformer for maximum reading.
10 (c)	REPEAT STEPS 7, 8 & 9						
11 (c)	Antenna Post FM (Remove line antenna)	270 ohms	98 Mc. Unmodulated	FM	98 Mc.	L4 Osc. Coil Slug.	Set oscillator to dial scale.
12 (c) (d)	Antenna Post FM (Remove line antenna)	270 ohms	98 Mc. Unmodulated	FM	98 Mc.	L7 Det. Coil Slug.	Align det. stage to maximum reading.